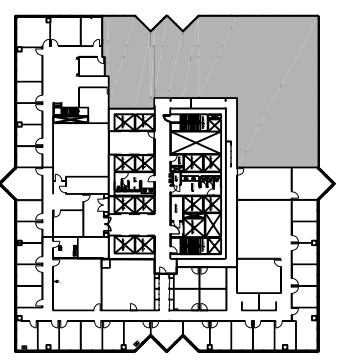


1000 TOWN CENTER  
 SUITE 1170  
 11th Floor  
 SOUTHFIELD, MI 48075



**TRANSWESTERN**<sup>®</sup>



11th FLOOR KEY PLAN



3000 Town Center  
 Suite 2500  
 Southfield, MI 48075  
 Phone: (248) 350-2222  
 Fax: (248) 350-2266  
[www.southfieldtowncenter.com](http://www.southfieldtowncenter.com)