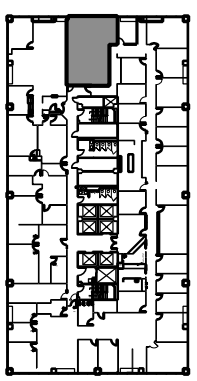
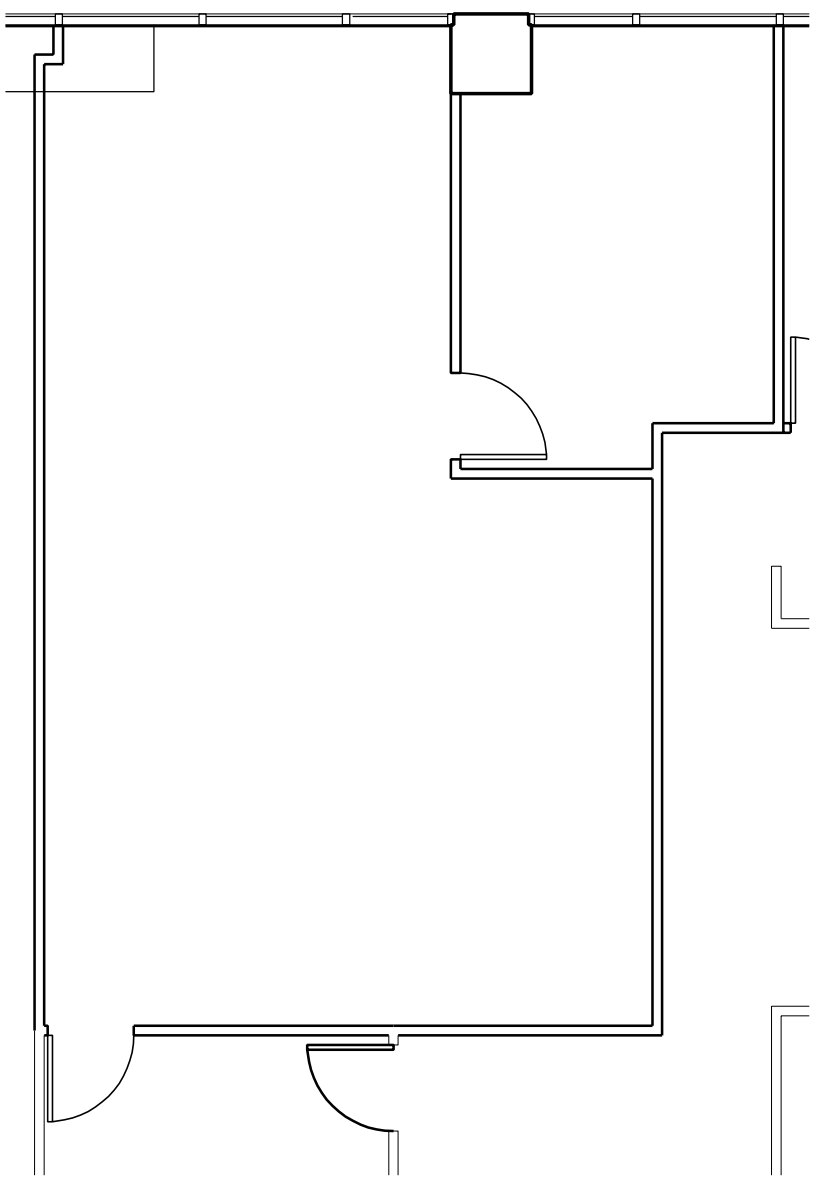


3000 TOWN CENTER
SUITE 1860

18th Floor
SOUTHFIELD, MI 48075
985 RSF

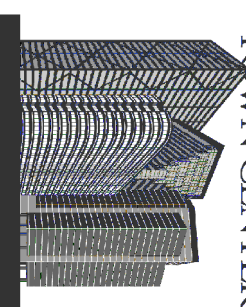


TRANSWESTERN[®]



18th FLOOR KEY PLAN

Southfield
TOWN CENTER



3000 Town Center
Suite 2500
Southfield, MI 48075
Phone: (248) 350-2222
Fax: (248) 350-2266
www.southfieldtowncenter.com