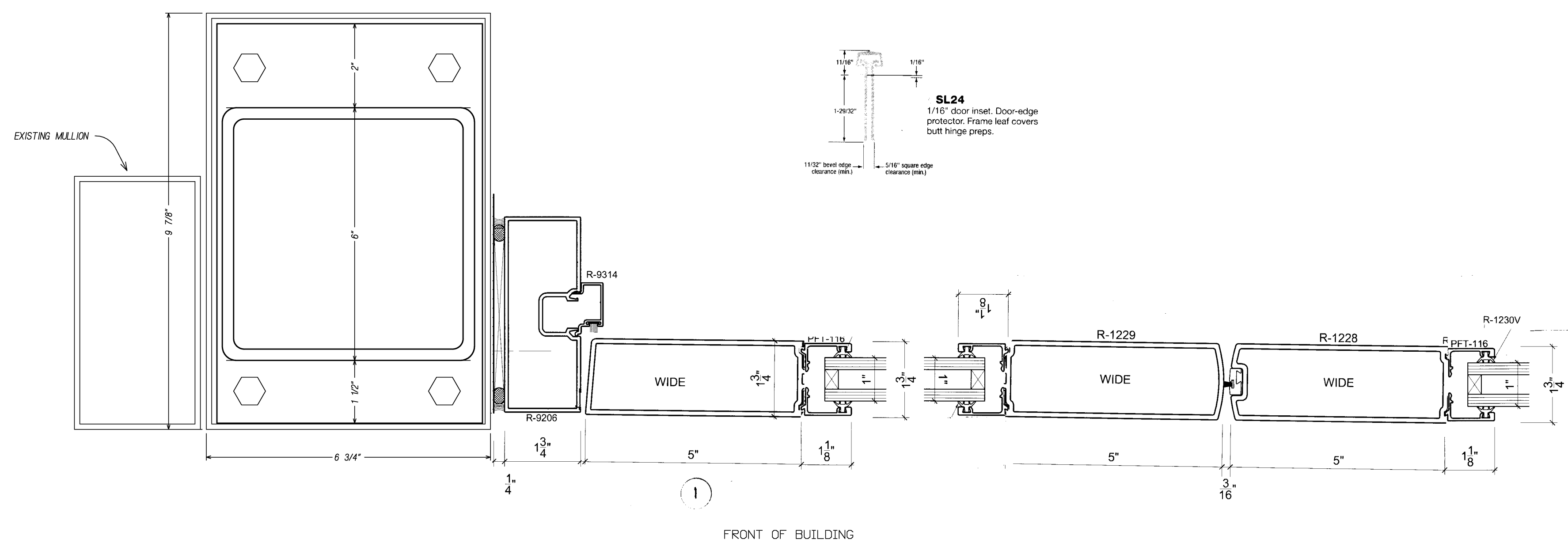
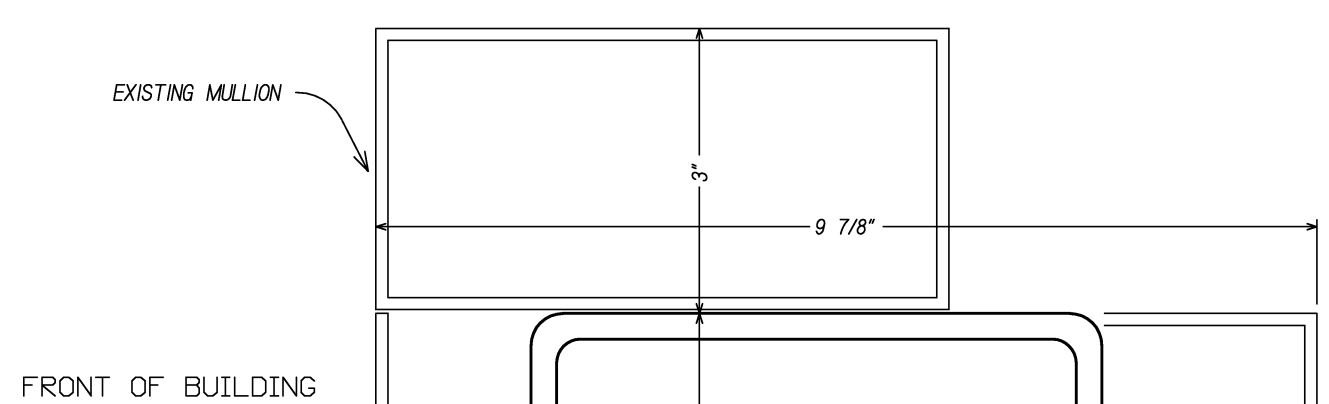


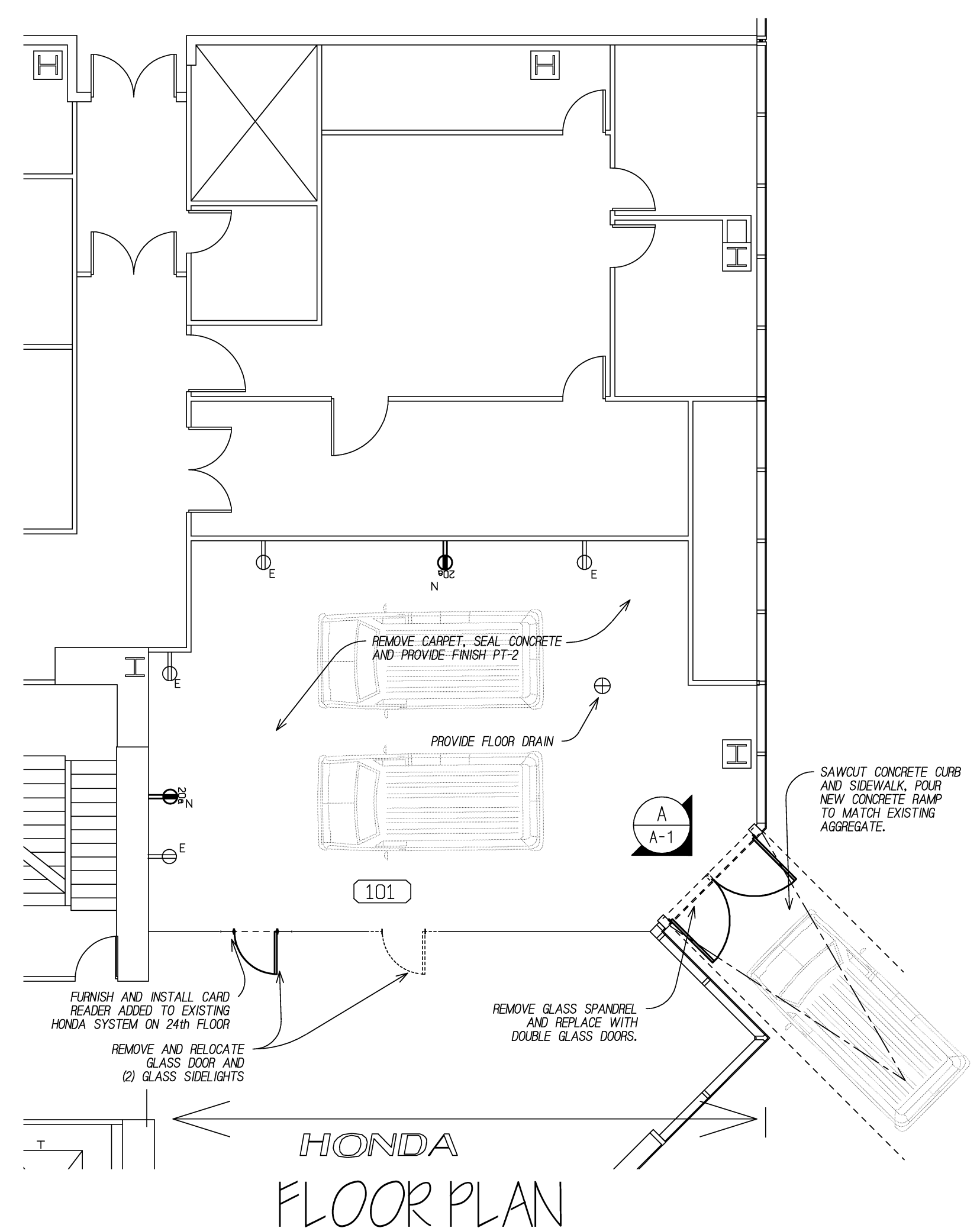
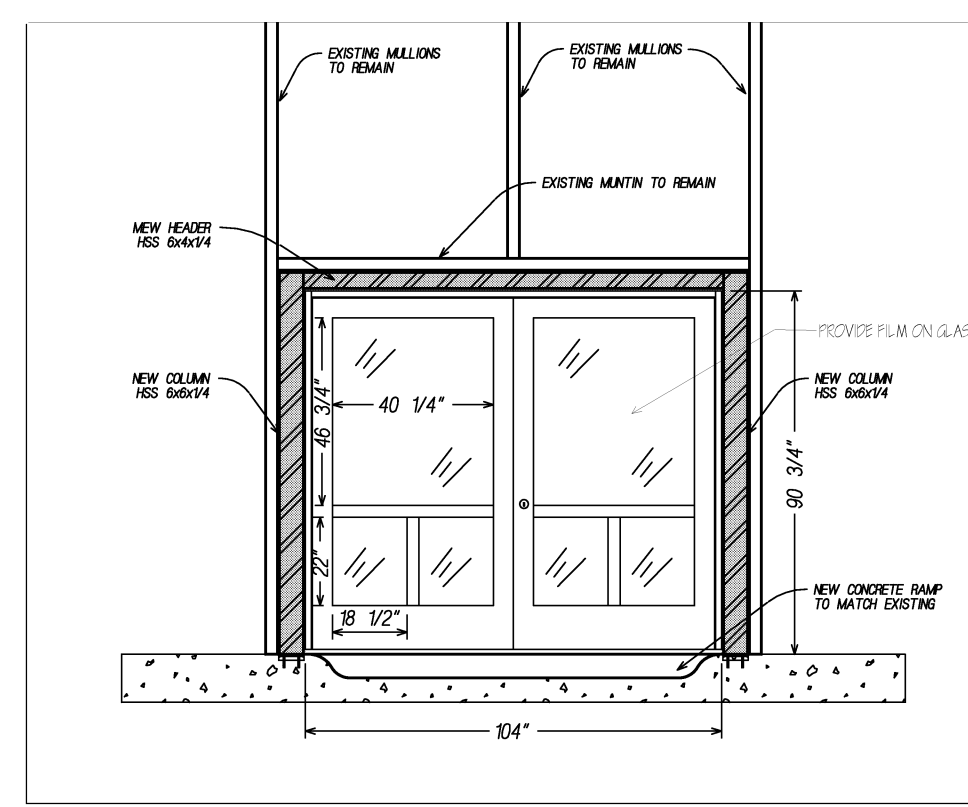
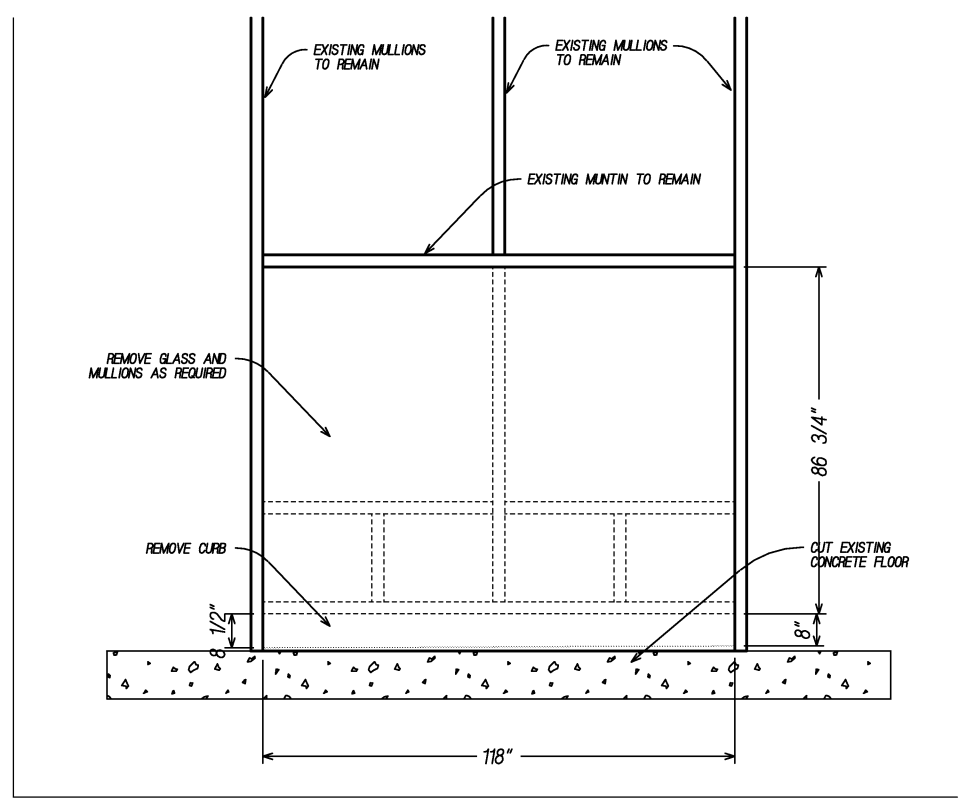
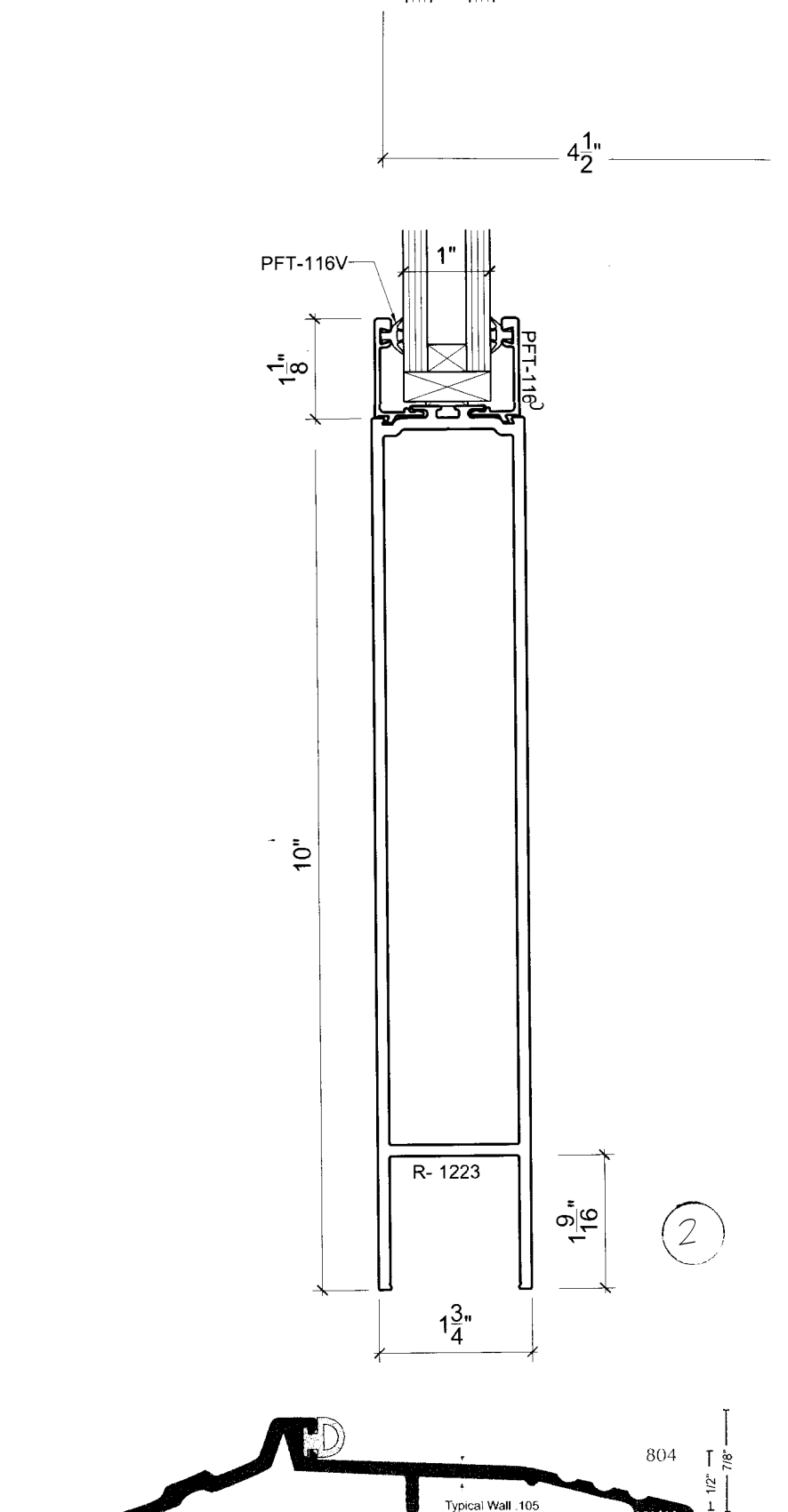
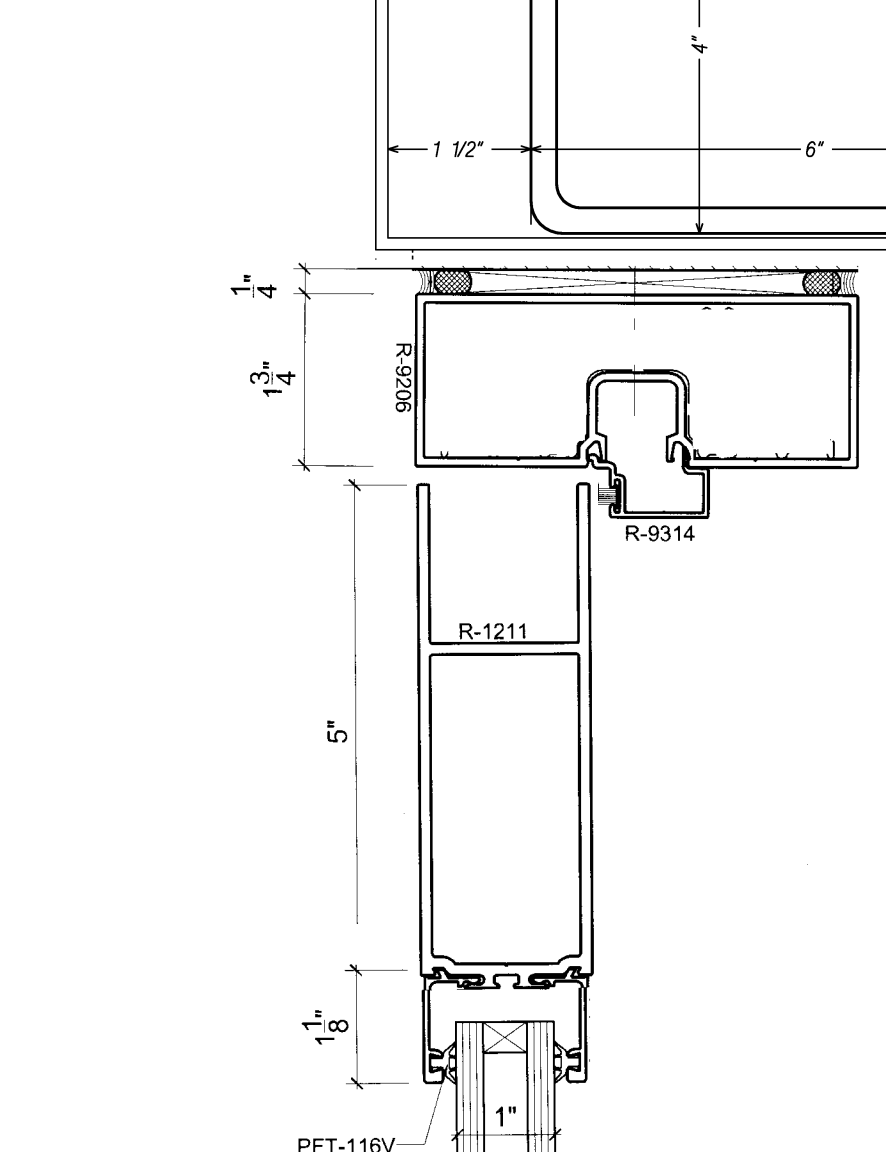
RAMCO METALS WIDE SLIDE DOORS  
 DARK BRONZE ANODIZED FINISH  
 1" CLEAR TINTED INSULATED GLASS  
 HARDWARE: SL 24 HEAVY DUTY CONTROLS HINGES  
 FLUSH BOLTS TOP AND BOTTOM INACTIVE LEAF  
 FLUSH BOLTS BOTTOM ONLY OF ACTIVE LEAF  
 MAXIMUM SECURITY LOCK WITH TURN ON THE INSIDE ONLY  
 5" PIANO THRESHOLD  
 NO HANDLES, CLOSER, CYLINDER ON EXTERIOR SIDE  
 PROVIDE AUTOMATIC OPENERS WITH (2) TRANSMITTERS  
 PROVIDE FILM ON GLASS TO MATCH EXISTING WINDOWS



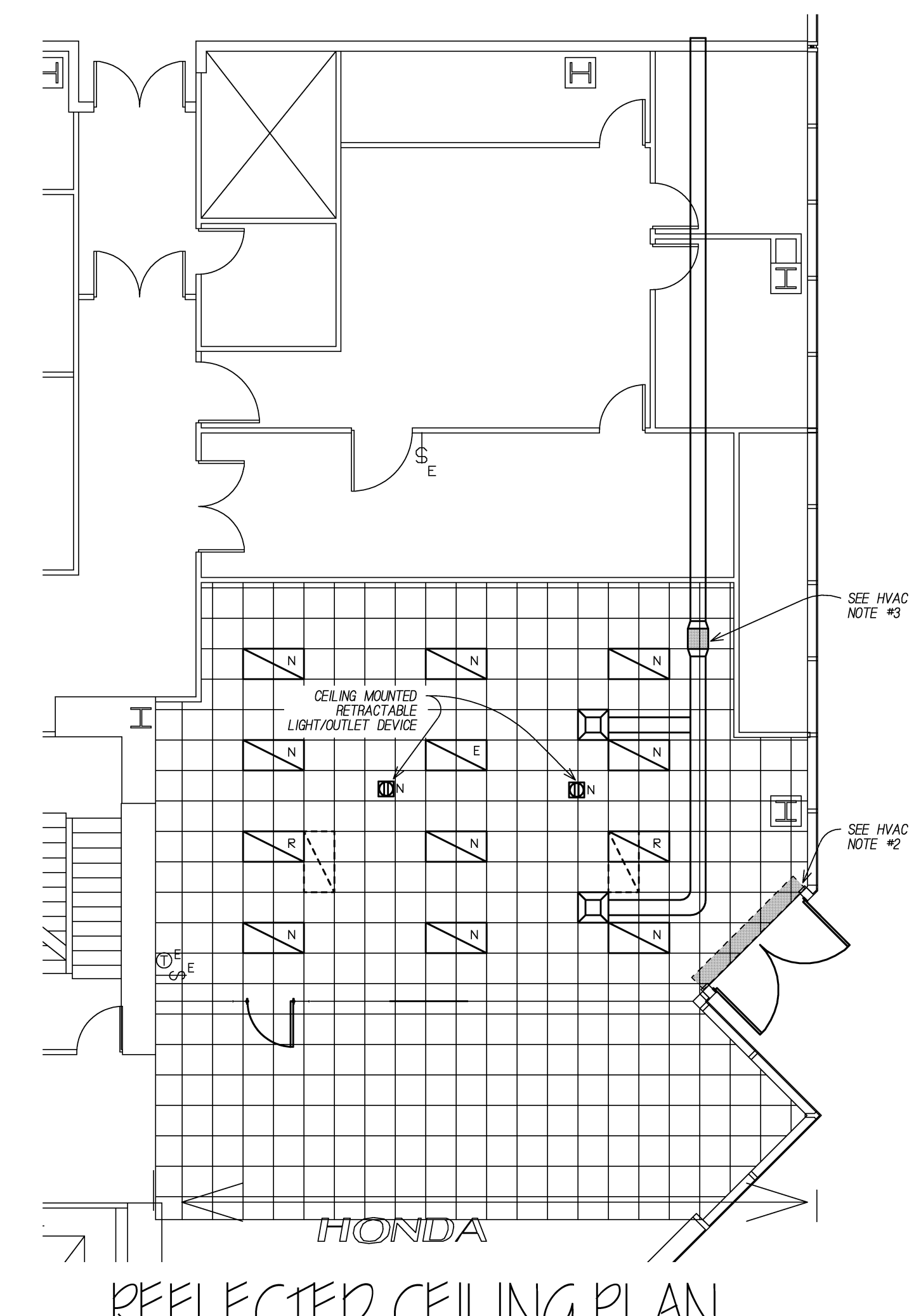
FRONT OF BUILDING



FRONT OF BUILDING



HONDA FLOOR PLAN



HONDA REFLECTED CEILING PLAN

**SYMBOL LEGEND**

- EXISTING PARTITION TO REMAIN
- NEW PARTITION TO CEILING (8'-6" AFF.) WITH WILSON PARTITIONS TOP TRACK 2-1/2" METAL STUDS @ 24" O.C. WITH 5/8" GYPSUM BOARD ON BOTH SIDES.
- NEW DOOR/FRAME
- ⊙ DOOR NUMBER
- ⊠ ROOM NUMBER
- ⊕ ELEVATION LABEL

**DEMOLITION LEGEND**

- EXISTING PARTITION TO BE REMOVED
- EXISTING DOOR TO BE REMOVED STOCKPILE FOR REUSE
- EXISTING DUPLEX TO BE REMOVED
- EXISTING PHONE OUTLET TO BE REMOVED
- EXISTING SWITCH TO BE REMOVED
- EXISTING THERMOSTAT TO BE REMOVED
- EXISTING JUNCTION BOX TO BE REMOVED

**ELECTRICAL LEGEND**

- ⊕ DUPLEX OUTLET
- ⊕ QUADPLEX OUTLET
- ⊕ 20 AMP DEDICATED CIRCUIT DUPLEX OUTLET
- ⊕ 20 AMP DEDICATED CIRCUIT QUADPLEX OUTLET
- ⊕ 20 AMP DEDICATED CIRCUIT DUPLEX OUTLET WITH GROUND FAULT INTERRUPT
- ⊕ PHONE/DATA OUTLET PLASTER RING WITH A PULL STRING
- ⊕ COMBINATION POWER/DATA FLUSH MOUNTED FLOOR OUTLET WIREMOLD AND/OR CORD
- ⊕ BASE POWER IN FOR SYSTEM FURNITURE 4 CIRCUIT, 0 WIRE
- ⊕ POWERPOLE FOR SYSTEM FURNITURE CONNECTION 4 CIRCUIT, 0 WIRE
- ⊕ FLOOR PUNCH FOR COMMUNICATIONS FIRE SEALED AFTER CABLE INSTALLATION

**REFLECTIVE CEILING LEGEND**

- ⊕ BUILDING STANDARD 24" X 48" LIGHT FIXTURE
- ⊕ EXISTING LIGHT FIXTURE TO BE REMOVED & RELOCATED
- ⊕ BUILDING STANDARD 24" X 24" LIGHT FIXTURE
- ⊕ INCANDESCENCE DOWNLIGHT FIXTURE TO MATCH EXISTING
- ⊕ SINGLE POLE LIGHT SWITCH
- ⊕ 3 WAY LIGHT SWITCH
- ⊕ DIMMER LIGHT SWITCH CONFIGURE DIMMERS FOR 150 WATT LAMP
- ⊕ NEW BUILDING STANDARD EXIT SIGNS LITHONIA L.E.S.B.K. 120/277V
- ⊕ EXISTING FIRE ALARM DEVICE SWIFLEX 4024-102
- ⊕ THERMOSTAT
- ⊕ EXHAUST FAN ON LINE

ROOM FINISH SCHEDULE								
ROOM NO.	ROOM NAME	FLOOR	BASE	WALLS			REMARKS	
				NORTH	SOUTH	EAST	WEST	
101	OPEN AREA	PT-2	B-2	PT-1	PT-1	PT-1	PT-1	

COLOR SCHEDULE		
MARK	MANUFACTURER & COLOR NUMBER	REMARKS
PT-1	SHERWIN WILLIAMS COLOR TND	
PT-2	CORE-L INTERIORS DRABAW H20 WATERPROOF POLYURETHANE COATING SMOOTH FINISH COLOR TND	SEE NOTE #1
B-1	#1 CORE RUBBER BASE COLOR TND	

#1 REMOVE EXISTING CARPET, GRIND AND SAND FLOORS TO FINISHED CONCRETE FREE OF ALL ADHESIVES FOR THE ACCEPTABILITY OF THE DURA COAT FLOOR COATINGS.

**ISM**  
 Interior Space Management of Michigan, Inc.  
 20811 Heide  
 Troy, Michigan 48064  
 (248) 352-4528  
 FAX (248) 352-4172  
 WEBSITE: WWW.ISMFM.I.COM

2080 Town Center, Suite 165  
 Southfield, Michigan 48075  
 (248) 352-2217  
 FAX (248) 352-1659

**TDG Architects**  
 TDG ARCHITECTS

**DEMOLITION NOTES**

- REMOVE CARPET AND BASE AS REQUIRED
- PATCH ALL OPENINGS OR VOIDS LEFT IN EXISTING WALLS DUE TO DEMOLITION OR REMOVAL OF EXISTING CONSTRUCTION.
- REMOVE EXISTING COMMUNICATIONS AND CABLEING THROUGHOUT.

**CONSTRUCTION NOTES**

- DO NOT SCALE DRAWINGS. USE FINDED DIMENSIONS ONLY. DIMENSIONS ARE TO CENTERS OF WALLS UNLESS OTHERWISE NOTED. ALL PERIMETER DIMENSIONS ARE FROM FACE OF PERIMETER WALL.
- ALL TRADES SHALL FIELD VERIFY ALL REQUIREMENTS FOR THIS PROJECT, AS WELL AS COMPLYING WITH ALL FEDERAL, STATE & LOCAL CODES AND REQUIREMENTS. SUBMIT PLANS FOR APPROVAL AND OBTAIN PERMITS BEFORE STARTING WORK.
- ALL PARTITIONS ADJACENT TO BASE BUILDING COLUMNS OR WALLS SHALL ALIGN WITH FACE OF EXISTING FINISHED SURFACE.
- EXISTING PERIMETER WINDOW TREATMENT TO REMAIN.

**PLUMBING NOTES**

- PLUMBING CONTRACTOR TO PROVIDE A FLOOR DRAIN.

**REFLECTED CEILING NOTES**

- REPLACE ANY STAINED, MISSING OR DAMAGED CEILING TILE
- REPAIR CEILING GRID AS REQUIRED.
- ELECTRICAL CONTRACTOR TO PROVIDE ENGINEERING DRAWINGS SHOWING ALL ELECTRICAL AND FIRE ALARM SYSTEM, INCLUDING EMERGENCY LIGHTS, EXIT SIGNS, SPEAKER HORNS, STROBE LIGHTS AND MISCELLANEOUS ELECTRICAL LOCATIONS AND REQUIREMENTS PER CODE.
- PROVIDE ONE LIGHT SWITCH IN EACH ROOM UNLESS OTHERWISE SHOWN ON PLAN.
- NEW LIGHT SWITCHES AND HVAC CONTROLS TO BE LOCATED • 48" AFF.

**HVAC NOTES**

HVAC CONTRACTOR TO PROVIDE ENGINEERING DRAWINGS SHOWING LOCATIONS OF ALL HVAC ELEMENTS PER CODE.

- HVAC CONTRACTOR TO FURNISH AND INSTALL 1" POWERED AIR CURTAIN, ELECTRIC HEATER ABOVE NEW DOUBLE DOORS.
- HVAC CONTRACTOR TO FURNISH AND INSTALL AN EXHAUST FAN TO BE DUCT TO OUTSIDE OF BUILDING, LOADING DOOR TO THE NORTH

**FIRE SUPPRESSION NOTES**

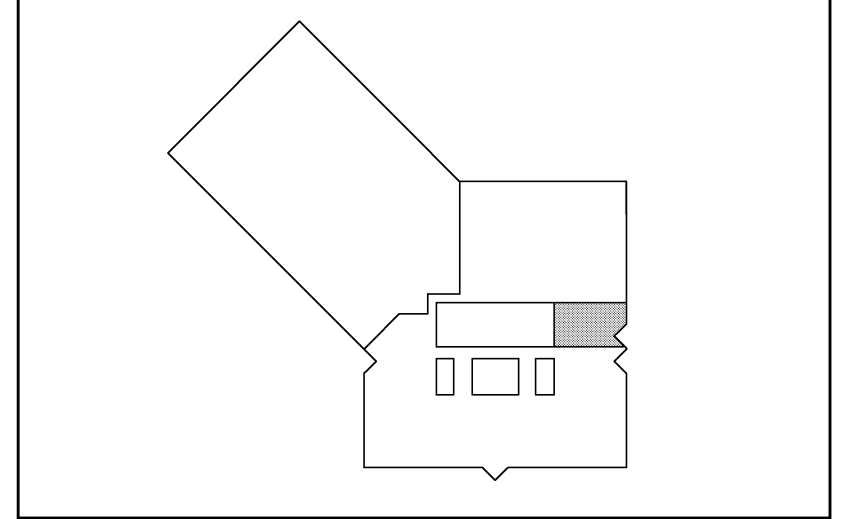
- FIRE SUPPRESSION CONTRACTOR SHALL FIELD VERIFY SPRINKLER LOCATION AND RELOCATE ACCORDINGLY, COMPLY WITH ALL CODES AND SUBMIT PLANS FOR APPROVAL, AND OBTAIN PERMIT BEFORE STARTING WORK.

**ELECTRICAL NOTES**

- ELECTRICAL DEVICES & COVER PLATES TO MATCH EXISTING.
- PHONE OUTLETS TO BE A PLASTIC RING WITH A PULL STRING
- ALL ELECTRICAL, PHONE & DATA OUTLETS TO BE MOUNTED • 5" AFF. UNLESS OTHERWISE NOTED.
- COMMUNICATIONS & CABLEING TO BE DONE BY TENANTS VENDOR.

**ALTERNATES**

- ELECTRICAL CONTRACTOR TO PROVIDE SEPARATE PRICING FOR METERING.



NEW TENANT SPACE FOR

**HONDA**

**SOUTHFIELD TOWN CENTER**  
 TOWER 1000  
 SOUTHFIELD MICH.

TITLE:

**CONSTRUCTION PLAN**

BUILDING	FLOOR	PLAN NORTH
1000	1	⊕

SHEET NO. A-1

SCALE 1/8"=1'-0"

DATE: 1-22-13