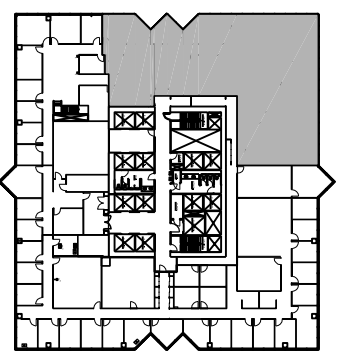


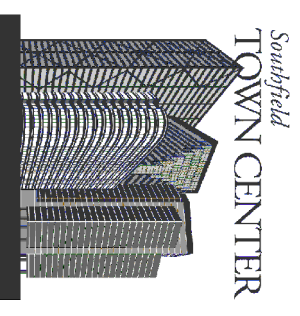
1000 TOWN CENTER
 SUITE 1170
 11th Floor
 SOUTHFIELD, MI 48075



TRANSWESTERN[®]



11th FLOOR KEY PLAN



3000 Town Center
 Suite 2500
 Southfield, MI 48075
 Phone: (248) 350-2222
 Fax: (248) 350-2266
www.southfieldtowncenter.com