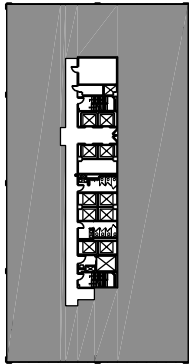
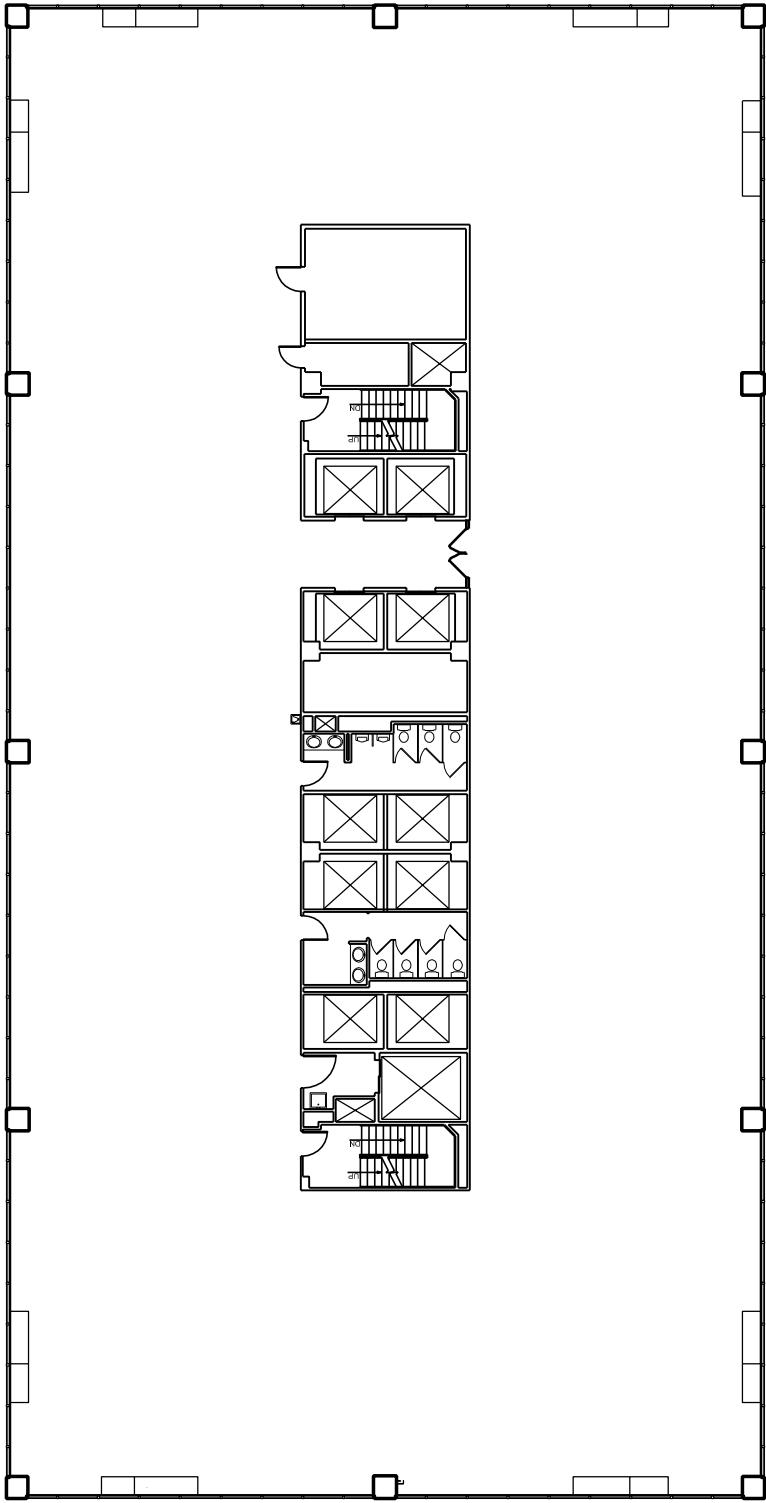


3000 TOWN CENTER
SUITE 1000

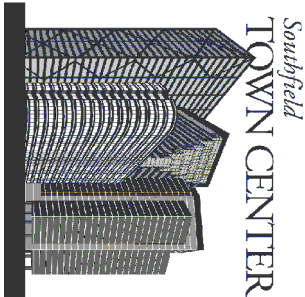
10th Floor
SOUTHFIELD, MI 48075



TRANSWESTERN®



10th FLOOR KEY PLAN



Southfield
TOWN CENTER

3000 Town Center
Suite 2500

Southfield, MI 48075
Phone: (248) 350-2222
Fax: (248) 350-2266

www.southfieldtowncenter.com