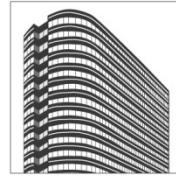
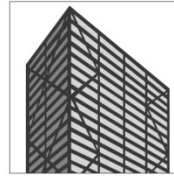
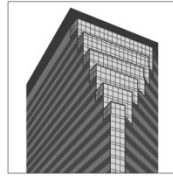
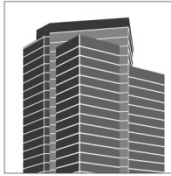


Southfield
TOWN CENTER



WELCOME TO SOUTHFIELD TOWN CENTER!!

Thank you for choosing Southfield Town Center to locate your business. We realize that the location of your business is one of the most important decisions you can make. Location affects your company's image, the morale of your employees and the overall goals of your company.

Town Center is a 35 acre, multi-million dollar complex consisting of offices, shops and restaurants, and the Westin Hotel-Southfield. Town Center was developed between 1975 and 1989 by The Prudential Realty Group. There are approximately two million square feet of office space in the 1000, 2000, 3000, 4000, and 4400 Town Center buildings. All of the buildings are connected via enclosed walkways and lobbies. A spectacular two-story indoor tropical garden atrium is located between the 2000 and 3000 buildings and is unique to the Detroit area. It is often the site of wedding ceremonies, wedding receptions, political fund raisers and other special events.

Town Center was the recipient of the Building Owners and Managers Association's (BOMA) "Building Owner of the Year" award in 2006, City of Southfield's "Redevelopment of the Year" award in 2006, Southfield Chamber of Commerce's "Business of the Year" award in 2005 and BOMA's "Office Building of the Year" award for both the Detroit area and the North Central Region in 1994. We believe these awards are indicative of the "Class A" services and facilities provided at Town Center. We look forward to servicing you during your tenancy at Town Center.

The Management, Leasing and Tenant Services offices are located in 3000 Town Center, Suite 2500. The phone number is 248-350-2222.

Please contact us for questions regarding lease renewals and expansions, reserved parking, construction and alterations, building access cards, directory requests, daily maintenance requests, electrical issues, plumbing repairs, light bulb replacement, cleaning and janitorial issues, hot and cold calls, elevator problems, key and lock requests, picture hanging, furniture repair, small repair jobs to doors, walls and carpeting, etc.

We look forward to serving you in the years to come!

Rev. 10.22.15

3000 TOWN CENTER, SUITE 2500, SOUTHFIELD MICHIGAN 48075 P 248.350.2222

southfieldtc@transwestern.com